


## Human IL-15 protein, His Tag

Cat #: PRP100103

Size: 10 $\mu$ g/100 $\mu$ g /1mg

### Product Information

	<b>Product Name:</b> Human IL-15 protein, His Tag		
<b>REF</b>	<b>Catalog Number:</b> PRP100103	<b>LOT</b>	<b>Lot Number:</b> Refer to product label
	<b>Purity:</b> > 95 % as determined by SDS-PAGE		
	<b>Storage:</b> Store at -20C		<b>Preparation method:</b> E. coli
	<b>Shipping:</b> The product is shipped at ambient temperature.		

**Background:** The protein encoded by IL-15 is a cytokine that regulates T and natural killer cell activation and proliferation. This cytokine and interleukine 2 share many biological activities. They are found to bind common hematopoietin receptor subunits, and may compete for the same receptor, and thus negatively regulate each other's activity. The number of CD8+ memory cells is shown to be controlled by a balance between this cytokine and IL2. This cytokine induces the activation of JAK kinases, as well as the phosphorylation and activation of transcription activators STAT3, STAT5, and STAT6. Studies of the mouse counterpart suggested that this cytokine may increase the expression of apoptosis inhibitor BCL2L1/BCL-x(L), possibly through the transcription activation activity of STAT6, and thus prevent apoptosis. Two alternatively spliced transcript variants of this gene encoding the same protein have been reported.

**Sequence:** Amino acid sequence derived from human IL15 (NP\_000576.1) (Asn18-Ser162) was expressed with a polyhistidine tag at the N-terminus.

**Protein length:** The recombinant human IL15 consists of 130 amino acids and predicts a molecular mass of 14.9 KDa. It migrates as an approximately 15 KDa band in SDS-PAGE under reducing conditions.

**Formulation:** Lyophilized from sterile PBS, pH 7.4.

**Storage Instructions:** Lyophilized Human IL15 protein, His Tag product should be stored desiccated below -18C. Upon reconstitution, the protein should be stored at 4C between 2 -7 days and for future use below -18C. For long term storage it is recommended to add a carrier protein (0.1% HSA or BSA). Please prevent freeze-thaw cycles.

**Usage notes:** Always centrifuge tubes before opening. It is recommended to reconstitute the lyophilized Human IL15 protein, His Tag in sterile ddH<sub>2</sub>O not less than 100 $\mu$ g/ml, which can then be further diluted to other aqueous solutions.

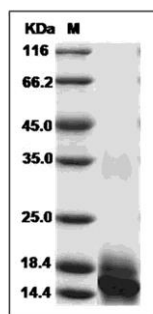


Fig. SDS-PAGE analysis of Human IL-15 protein, His Tag.

**Note:** The product listed herein is for research use only and is not intended for use in human or clinical diagnosis. Suggested applications of our products are not recommendations to use our products in violation of any patent or as a license. We cannot be responsible for patent infringements or other violations that may occur with the use of this product.